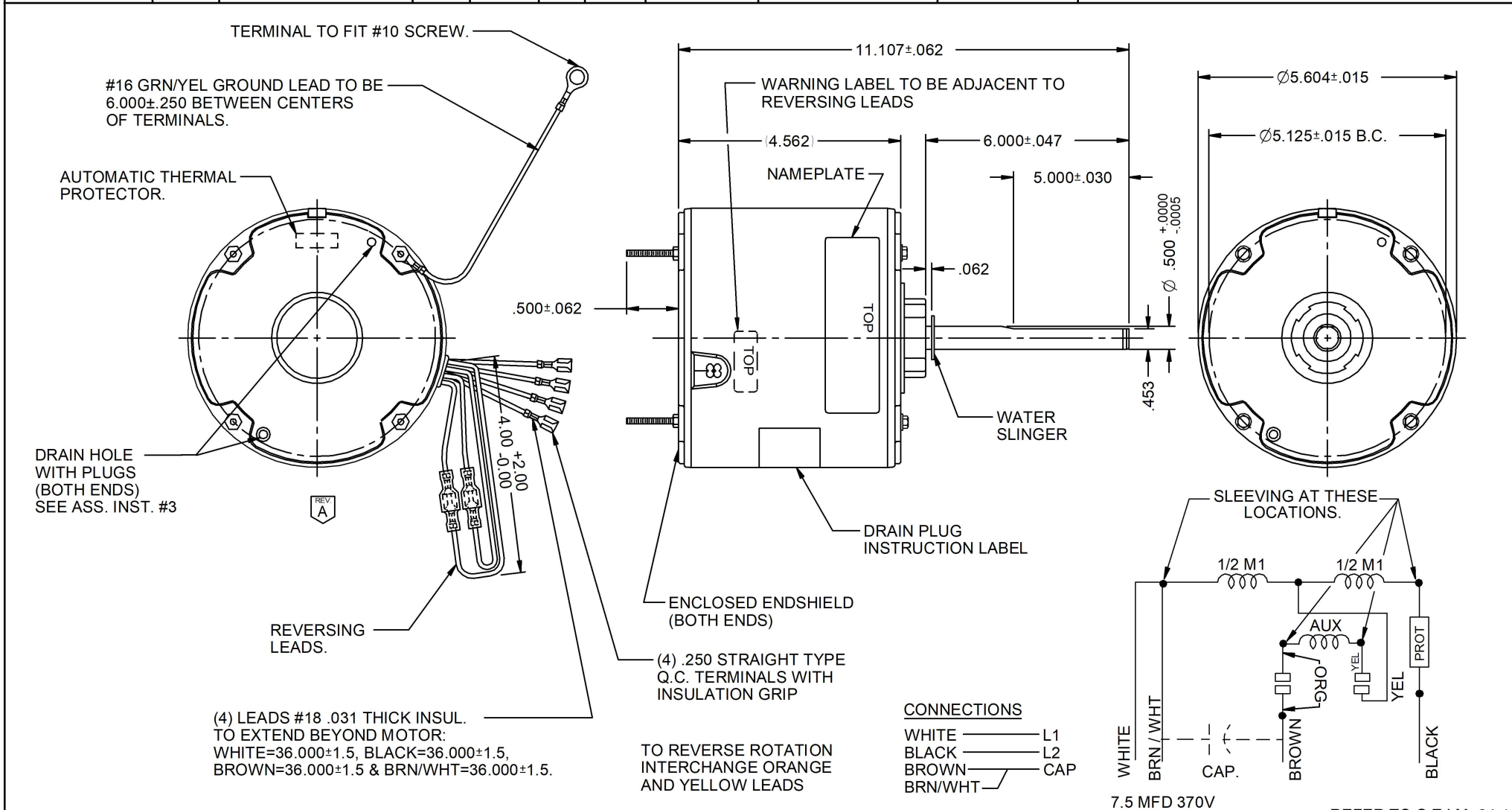


MODEL	REF	CUSTOMER	HP	VOLTS	AMPS	HZ	RPM	ROTATION	CUSTOMER PN	DESCRIPTION / REMARKS
K55HXRNV-2960	A101073	WHOLESALE-HAC	1/4	460	.8	60	1075	CW LEAD END REV	3736	K55 BALL BEARING ENCLOSED



NIDEC MOTOR CORPORATION 29-Aug-19

REFER TO S.E.I.M. 24-1

DELETED SEAM WELD NOTE	REVISION RECORD FOR: ECO E35181
ISSUED BY: D. VALLE	ENGINEER APPROVED: D.TEJEDA

DIMENSIONS ARE FOR REFERENCE ONLY

UNLESS TOLERANCE IS SPECIFIED

NIDEC MOTOR CORPORATION

INFORMATION DISCLOSED ON THIS DOCUMENT IS CONSIDERED PROPRIETARY AND SHALL NOT BE REPRODUCED OR DISCLOSED WITHOUT WRITTEN CONSENT OF NIDEC MOTOR CORPORATION

REVISION DATE: 29-AUG-19

TITLE	CODE	ITEM NO.	REV	SHEET NUMBER	DWG SIZE
CUSTOMER DETAIL DRAWING	V02	826349	A	1 OF 3	B