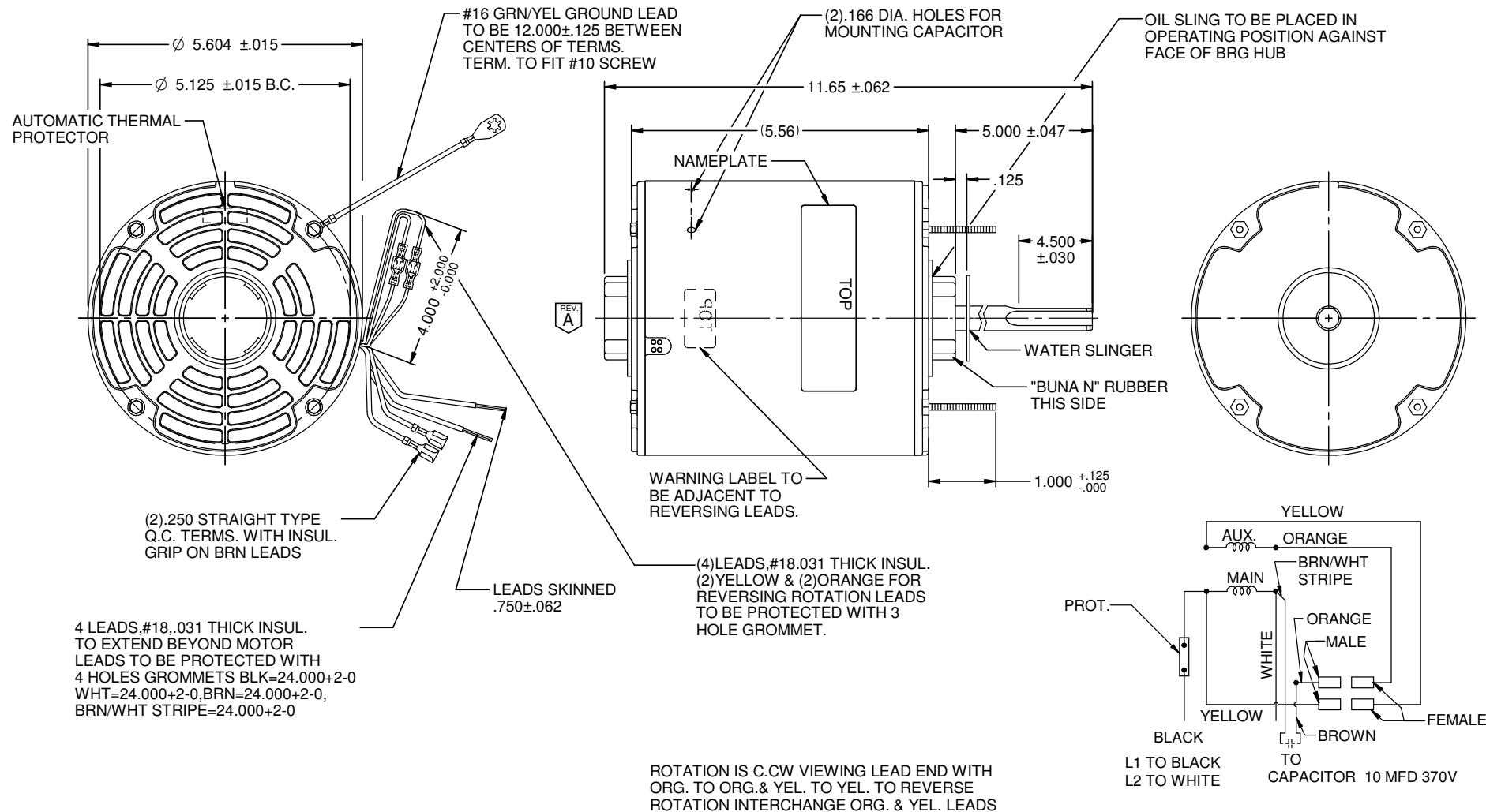


MODEL	REF	CUSTOMER	CUSTOMER PN	HP	VOLTS	AMPS	HZ	RPM	ROTATION	DESCRIPTION / REMARKS
K55HXSPH-9906		STANDARD	3097	3/4	208-230	4.7	60	1075	CCW LE REV.	K55 HUB, S/A BRG, OPEN



NIDEC MOTOR CORPORATION 11-Sep-19

REFER TO S.E.I.M. 24-1

REVISION RECORD FOR: ECO 35283		DIMENSIONS ARE FOR REFERENCE ONLY		NIDEC MOTOR CORPORATION				REVISION DATE: 11-SEP-19	
THE RING DIAMETER VALUE WAS REMOVED		UNLESS TOLERANCE IS SPECIFIED		INFORMATION DISCLOSED ON THIS DOCUMENT IS CONSIDERED PROPRIETARY AND SHALL NOT BE REPRODUCED OR DISCLOSED WITHOUT WRITTEN CONSENT OF NIDEC MOTOR CORPORATION				REV	SHEET NUMBER
ISSUED BY: E. MARTINEZ		ENGINEER APPROVED: D. TEJEDA		TITLE		CODE	ITEM NO.	A	1 OF 3
				CUSTOMER DETAIL DRAWING		V02	824782		B

V02\_NMCB (MAR-2014)

SOLDEDGE