



EXTENSION FRAME TO EVOLUTION / Ri LINES



1. DESCRIPTION

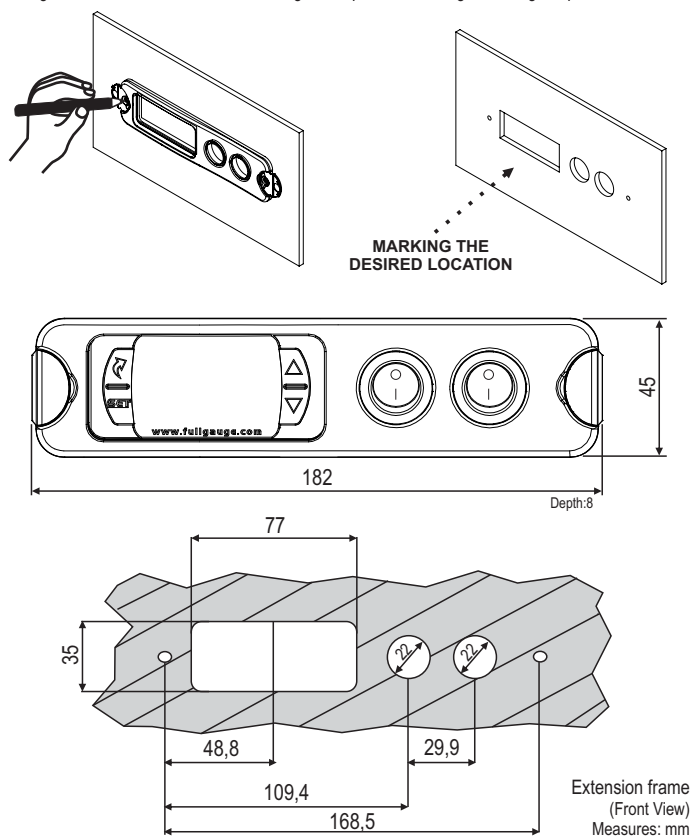
The Full Gauge Controls extension frame allows the installation of Evolution / Ri line with measures 76x34x77 mm (dimensions of the clipping for fixing in the extension frame is 71x29mm) in varied situations, since it eliminates precision cut to embed the instrument. Allows customization via a sticker with the brand and the company contact, and accompany two 10A (250 Vac) switches that can trigger internal light, air curtain, on / off system or fan.

2. PACKAGE CONTENTS

- 1 extension frame
- 2 keys ON/OFF
- 2 Screws M4

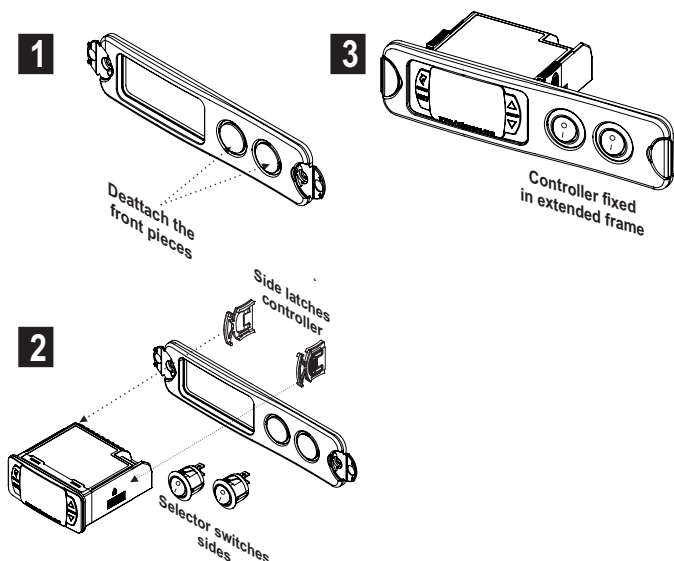
3. MARKING FOR DRILLING AND FIXING

Using the extension frame, do the marking with a pencil for drilling and fixing the points indicated.



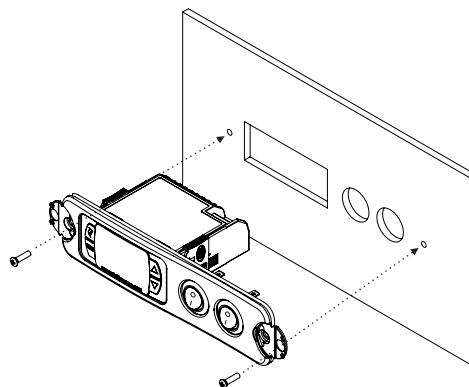
4. MOUNTING THE CONTROLLER IN EXTENSION FRAME

Insert the controller and keys from the front side of the frame and the side latches on the back of the controller, as shown below.

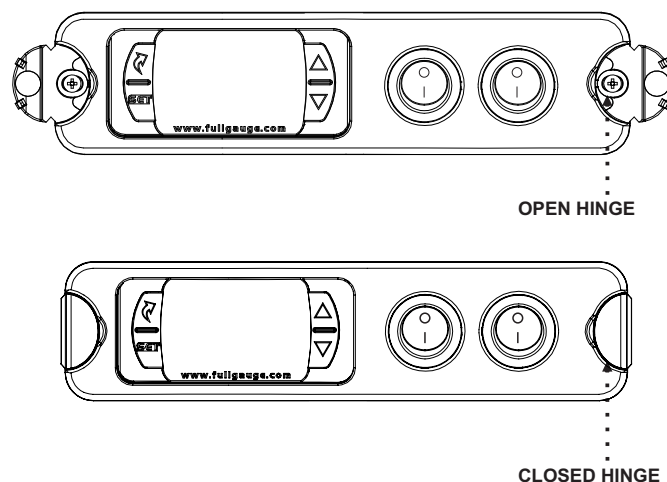


5. FIXING PANEL

Fix the extension frame to the desired location with the screws that came with the product.

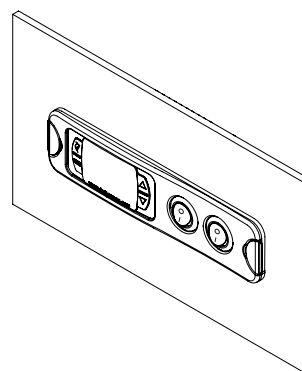


After securing the extension frame with the product, close the side hinges, concealing the screws.



6. FIXED EXTENSION FRAME

Below the illustration of the extension frame fixed to the panel.



ENVIRONMENTAL INFORMATION

Package:
The packages material are 100% recyclable. Just dispose it through specialized recyclers.

Products:
The electro components of Full Gauge controllers can be recycled or reused if it is disassembled for specialized companies.

Disposal:
Do not burn or throw in domestic garbage the controllers which have reached the end-of-life. Observe the respectively law in your region concerning the environmental responsible manner of dispose its devices. In case of any doubts, contact Full Gauge controls for assistance.